



Product Summary Guide



“The greatest constructions require solid foundations, the best being built on ROCK. Here is the foundation that supports FOSROC”

Dr. James Hay, Chairman – JMH Group

Our Profile

Fosroc commenced its Indian operations in 1981 and established a 100% subsidiary in 1999.

Fosroc has four state-of-the-art manufacturing facilities at Bengaluru, Karnataka; Ankleshwar, Gujarat; Kolkata, West Bengal and Keshwana, Rajasthan.

Fosroc Chemicals (India) Pvt. Ltd. works closely with its customers, including distribution and Applicator associates, through its well-equipped technical service department, a network of sales engineers, customer service professionals, Concrete technologist, Specification team etc. Fosroc India prides itself for the level of technical and customer support that it gives to its valued customers.



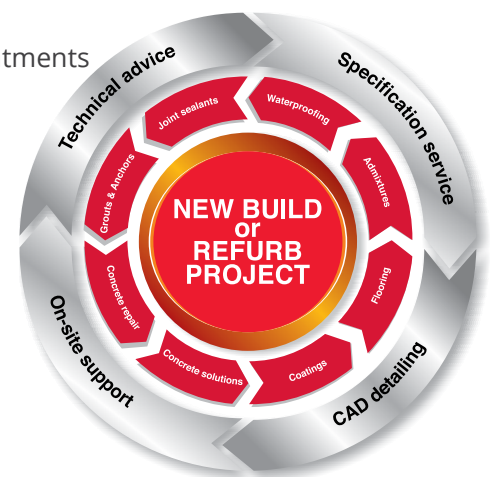
International leverage gives Fosroc the opportunity to offer tried and tested solutions from one geographical region to another with great confidence.

Fosroc Chemicals (India) Pvt. Ltd. provides time-tested solutions that include services such as:

- Diagnosis and Specification Support
- Application Support
- Distribution Support
- After-Sales Service
- Mix design support

Fosroc Chemicals (India) Pvt. Ltd. remains focused on the Industry, Infrastructure and Building Segment with a wide range of quality products.

- Admixtures and Surface Treatments
- Grouts and Anchors
- Industrial Flooring
- Concrete Repair
- Protective Coatings
- Joint Sealants and Adhesives
- Waterproofing
- Cement Additives



Contents:

Admixtures	04 - 08
Surface Treatments	09
Grouts & Anchors	10 - 11
Concrete Repairs	12 - 14
Industrial Flooring	15 - 17
Protective Coatings	18 - 21
Joint Sealants	22
Waterproofing	23 - 27
Adhesives	28 - 29
Grinding Aids and Performance Enhancers	30 - 31

Chemical admixtures are used to modify and improve the properties of fresh and hardened concrete or mortar.

Product	Description	Typical Uses	Dosage/Coverage/Yield
▶ Water Reducing Admixtures (Plasticisers)			
Conplast P211 5, 20 and 200 litres	Water reducing admixture. Conforms to IS:9103-99 & Complies with ASTM C494 as Type A & IS:2465.	All structural and general concrete where improved density and quality are required. Cement saving where excess cement proves necessary to obtain target strength.	0.2 to 0.5 litre / 100kg of total cementitious material
Conplast P505 5, 20 and 200 litres	High performance slump retaining and water reducing admixtures. Complies with BS 5075 part 1 and ASTM C494 as Type B and D & IS:9103-99.	Cement saving can be made without reduction in strength and workability. Used for all structural concrete where improved density and quality are required.	0.4 to 1.0 litre / 100kg of total cementitious material
▶ Retarding Plasticisers			
Conplast RP264 5, 20 and 200 litres	Retarding and water reducing admixture. Conforms to IS9103-99. Also complies with ASTM C494 Type B and Type D.	Avoidance of cold joints where delay in transport and placing of concrete occurs-towers, chimneys, High-rise buildings, using slip form shutters, tunnels/shaft lining, offshore construction and piles.	0.2 to 0.6 litre / 100kg of total cementitious material
Conplast R 20, 200 litre & bulk supply.	Retarding water reducing admixture. Conplast R complies with BS 5075 Part 1 and with ASTM C494 as Type B and Type D.	To extend the working life of semi-dry concrete screeds. Particularly suitable for use in mixes having fly ash and also improve the working life of semi dry concrete mixes, specifically RCC (Roller Compacted Concrete) type of mixes.	0.25 to 0.6 litre per 100 kg of total cementitious material
Conplast SR 5,20 and 200 litres	Surface retarder for concrete.	Surface retarder for producing exposed aggregate concrete finish in face-down precast concrete manufacture.	8-12m ² / litres
▶ High Range Water Reducing Admixtures (Superplasticisers) - SNF Based			
Conplast SP337 5, 20 and 200 litres. Also in 250 kg	High performing water reducing super plasticisers. Conforms to IS:9103-1999 also complies with IS:2645-2003, BS5075 part 3 and ASTM C-494 Type F.	To produce pumpable concrete for low water cement ratio concrete. Easy compaction in heavily reinforced concrete bridges, foundations columns, beams and narrow form work units.	0.5 to 1.5 litre per 100 kg of total cementitious material
Conplast SP 430 5, 20, 200 litres. Also in 200 & 250 Kg	High range super plasticising admixture. Complies with IS:9103:1999 and BS 5075 Part 3, it also conforms to ASTM C-494 Type F and Type G depending on the dosage used.	Speeds up construction, increases workability and cohesion, aids pumping by reducing line friction and dry packing, low porosity resulting in sustainability improved water penetration resistance.	0.5 to 1.5 litre per 100 kg of total cementitious material
Conplast SP 430ES2 200 litres 250 kg & bulk supply	High performance super plasticising admixture. Conplast SP430 ES2 complies with IS9103:1999, BS 5075 Part 3 and with ASTM C494 Type 'G' admixture depending on dosage used.	To provide increased ultimate strength gain by significantly reducing water demand in a concrete mix. To provide improved durability by increasing ultimate strength and reducing concrete permeability.	0.6 - 1.5 litres per 100 kg of total cementitious material
Conplast SP 430SRV 200 litres & 250 kg	Slump retention admixture for structural concrete Conplast SP430SRV complies with the requirement of ASTM C 494-80 as a Type G & IS:9103-1999.	Conplast SP430SRV is used where a high degree of workability is required and also as an aid to workability retention where delays in transportation or placing are likely or when high ambient temperatures cause rapid slump loss.	0.35 to 0.90 litres / 100 kg - for normal mixes & 0.5 to 1 litre/100 kg for high cement content mixes.
Conplast SP 430G8 200 litres and 250 kg	High performance super plasticising admixture. Conplast SP430 G8 complies with IS:9103:1999 and BS:5075 Part 3. Conplast SP430 G8 conforms to ASTM-C-494 Type 'G'.	To produce pumpable concrete to obtain high strength by substantial reduction in water resulting in low permeability and high early strength.	0.5 - 1.5 litres /100 kg of total cementitious material

Product	Description	Typical Uses	Dosage/Coverage/Yield
Conplast SP 430 KRM6 5, 20 and 200 litre bulk supply.	Conplast SP430KR(M)6 has been specially formulated to give high water reductions up to 25% without loss of workability or to produce high quality concrete of reduced permeability.	<ul style="list-style-type: none"> To produce pumpable concrete To produce high strength, high grade concrete M30 & above by substantial reduction in water resulting in low permeability and high early strength. To produce high workability concrete requiring little or no vibration during placing. 	0.5 - 1.5 litres /100 kg of total cementitious material
Conplast SP430 ITPQ 200 kg & bulk supply.	Super plasticising admixture for PQC concrete. Conplast SP430ITPQ complies with IS:9103:1999 and BS:5075 Part 3. Conplast SP430 conforms to ASTM-C-494 Type 'G' depending on the dosage used.	Best Suitable for PQC concrete by substantial reduction in water resulting in low permeability and high early strength.	0.5 - 1.5 litres/100kg of total cementitious material
Conplast SP 500KL 200, 250 kg & bulk supply	High performance water reducing and super plasticising admixture. Conplast SP500 KL complies with IS:9103:1999 (2007) and conforms to ASTM-C-494 Type 'G'.	To produce pumpable concrete to obtain high strength by substantial reduction in water resulting in low permeability and high early strength.	0.5 - 1.3 litres /100 kg of total cementitious material
Conplast SP550 250 kg drums & bulk supply.	Conplast SP550 has been specially formulated to give higher water reductions without loss of workability or to produce high quality concrete of reduced permeability.	<ul style="list-style-type: none"> To produce pumpable concrete To produce high strength, high grade concrete by substantial reduction in water resulting in low permeability and high early strength. To produce high workability concrete requiring little or no vibration during placing. 	0.5 - 1.5 litres /100 kg of total cementitious material
Conplast SP 600 200, 250 kg & bulk supply	High range water reducing, super plasticising and slump retaining admixture. Conplast SP600 complies with IS:9103:1999 and BS:5075 Part 3. Conplast SP600 conforms to ASTM-C-494 Type 'D' and Type 'G' depending on the dosages used.	To produce pumpable concrete for low water cement ratio by substantial reduction in water resulting in low permeability and high early strength.	0.5 - 1.3 litres /100 kg of total cementitious material
▶ Air Entraining Agents			
Conplast PA21(S) 200 litres	Water reducing & air entraining admixtures, conforms to IS:9103-1999 (2007).	Concrete water retaining structures-dams, canal linings and reservoirs and costal structures.	0.2 - 0.4 litres/100 kg of total cementitious material
Conplast AEA 20 and 200 litres & bulk supply.	Air entraining admixture. Conplast AEA complies with BS 5075 Part 2, BS 4887 Part 1, ASTM C260.	To produce air entrained concrete for increased durability and resistance to damage by frost and deicing salts. Typical applications include concrete roads and concrete dams, airport runways and taxiways and other extensive areas of concrete exposed to potential frost damage.	0.08 litres /100 kg of total cementitious material
▶ High Range Water Reducing Admixtures (Hyper Plasticisers) - PCE Based			
Auramix 200 200 kg and bulk supply.	High performance PCE based admixture for wide range of concrete grades.	Auramix 200 is a high performance retarding super plasticisers intended for applications where retardation and long workability retention are required.	0.3 to 2 percent by weight of total cementitious material
Auramix 300 200, 250 kg and bulk supply.	Advanced low viscosity retarding super plasticiser, based on poly carboxylic technology	Auramix 300 is a high performance retarding super plasticiser intended for applications where retardation and long workability retention are required, and it has been developed for use in : Mass raft foundation, Pumped concrete, Concrete requiring long workability retention, High performance concrete.	0.5 to 3.0 litres/100 kg of total cementitious material



Product	Description	Typical Uses	Dosage/Coverage/Yield
Auramix 350 200 kg and bulk supply.	High performance PCE based admixture for wide range of concrete grades. Auramix 350 complies to IS:9103 : 1999 as a water reducing admixture.	Auramix 350 is a high performance super plasticizer suitable for low and high grade concrete and intended for applications where high water reduction and long workability retentions are required.	0.3 to 1.5 percent by weight of total cementitious material
Auramix 350 PQC 200 kg, 250 kg, and bulk supply.	High performance PCE based admixture for pavement quality concrete grades for road concrete. Complies to IS:9103 : 1999 and ASTM C494 as a water reducing admixture	Best suitable for PQC concrete	0.3 to 1.3 percent by weight of total cement binder
Auramix 400 200 Kg, 250 Kg and bulk supply.	Advanced low viscosity high performance super plasticiser, based on poly carboxylic technology. Auramix 400 complies with IS:9103-1999(2007). It also complies with ASTM C494 Type G.	Auramix 400 is a high performance super plasticiser intended for applications where high water reduction and long workability retention are required, and it has been developed for use in: Self-compacting concrete, Pumped concrete, Concrete requiring long workability retention.	0.4 to 2 percent by weight of total cementitious material
Auramix 450 200 Kg, 250 Kg and bulk supply.	High range water reducing admixture based on poly carboxylic technology. Combines the properties of water reduction and workability retention	Used where high water reduction & long workability retention is required in SCC, pumped concrete, High performance concrete	0.5 - 2 litres per 100 kg of cementitious material
Auramix 300 Plus 200, 250 kg and bulk supply.	Robust concrete admixture for long workability retention with good rheology.	Auramix 300 Plus is a high performance retarding super plasticiser intended for applications where retardation and long workability retention (4 hours and more).	0.4 to 2 percent by weight of total cementitious material
Structuro 201 200 Liters.	A high performance concrete superplasticiser, based on polycarboxylic technology.	For applications where increased early and ultimate compressive strengths are required, and it has been developed for use in: Precast applications, High early strength, High performance concrete, Self-compacting concrete, Concrete requiring long workability retention.	The normal dosage range is between 0.4 to 2.0 liters/100 kg of cementitious material
Structuro 203 200 litre and 250kg.	A high performance concrete super plasticiser, based on polycarboxylic technology.	Precast applications Concrete requiring long workability retention High performance concrete.	The normal dosage range is between 0.5 to 3.0 liters/100 kg of cementitious material
Auramix BCI 200kg, 240kg barrels and bulk supply.	Organic Bipolar concrete penetrating corrosion inhibiting admixture.	Used as corrosion inhibiting admixture for all reinforced concrete.	Auramix BCI is recommended to use at a dosage of 3 to 5kgs/m ³
► Admixture for Precast Industries			
Auracast 100 200 Kg, 250 Kg and bulk supply.	Advanced low viscosity super plasticiser, based on poly carboxylic technology for concrete precast industries.	High performance precast super plasticiser intended for applications where reduction in cycle time and early strength are required.	0.5 to 3 percent by weight of total cementitious material
Auracast 270M 200 kg, 250 kg and bulk supply.	High performance low viscosity PCE based admixture for early strength with slump retention. Auracast 270M complies to IS:9103:1999 as a super plasticizer and ASTM C 494 Type F and G depending on dosage.	Auracast 270M is a high performance super plasticizer suitable for precast concrete industry to obtain high early strength and workability retention.	0.5 to 1.5 percent by weight of total cementitious material

Product	Description	Typical Uses	Dosage/Coverage/Yield
Auracast 405 200 kg, 250 kg and bulk supply.	High performance low viscosity PCE based admixture for SCC & early strength. Auracast 405 complies to IS:9103 : 1999 as a water reducing admixture.	Auracast 405 is a high performance super plasticizer suitable for precast concrete industry to obtain high early strength and workability retention. Suitable for Self-compacting concrete.	0.5 to 1.5 percent by weight of total cementitious material
Auracast 50 20 kg, 200 kg and bulk supply	Concrete admixture for precast concrete elements to obtain high early compressive strength complies to IS:9103:1999 and ASTM C494 Type F.	Precast concrete such as Electric poles, precast manholes, cement tiles, precast gutters, kerb stones, building blocks etc.	0.2 - 2 litres /100 kg of total cementitious material
► Accelerators and Corrosion Inhibitors			
Conplast NC 5, 20, 200 litres & 200 kg	Chloride free accelerating admixture, complies with IS:9103-99, BS 5075 Part 1 and ASTM C494 Type C.	To accelerate the setting and early strength gain of port land cement concrete and mortar. Typical application includes precast concrete sections, concrete placed in cold weather conditions and concrete repairs etc.	2 - 3 litres /100 kg of total cementitious material
Conplast CN 20 and 200 litres	Calcium nitrite based corrosion inhibiting admixture.	As a corrosion inhibiting admixture in reinforced concrete.	7.5-22.5 litre m ³ approximately 2-6% by weight of total cementitious material
Special Admixtures			
► Underwater Admixture			
Conplast UW(L) 200 litres	Anti washout admixture for Underwater concreting.	Designed to allow concrete to be placed underwater.	0.6 to 1% by weight of total cementitious material
► Foaming agent for light weight concrete			
Conplast F 297 25 and 210 litres	Foam cement admixture.	For the production of foamed low density mortars. Typical applications include trench filling for road reinstatement, lightweight roofing screeds and the filling of undesirable voids such as old sewers and solvent tanks. Towers, chimneys, high buildings, slip form structures, tunnel/ shaft lining, offshore construction and in-situ piles.	Refer data sheet
► Integral Waterproofing Compounds			
Conplast WL Xtra 200 ml, 1 L, 5 L, 10 L, 20 L, 50 L and 200 litre container	Integral waterproofing admixture with advanced technology.	Recommended for all types of concrete and plaster. Ideal for basements, tanks, balcony, floor and roof slabs.	The Optimum dosage is 200 ml for 50 kg of cement. Site trials shall be carried out to authenticate the optimum dosage.
Conplast Crystalline 30 kg	Integral waterproofing admixture based on crystalline formation to produce water tight concrete.	Conplast Crystalline is an integral waterproofing admixture to produce water tight concrete. The active chemical in Conplast Crystalline react with moisture available in concrete to produce non soluble crystal formation throughout the pores of capillary tracks thus making concrete permanently sealed against water penetration from any direction. Conplast Crystalline is developed to use in all types of concrete foundation below ground, water reservoir, tunnel concreting, retaining walls and subways, water tank and swimming pools & precast unit.	1 to 2 % by weight of total cementitious material
Conplast WP90 Powder 1 and 25 Kg	Integral waterproofing powder additive for concrete and mortar Conforms to IS:2645-2003.	To reduce the permeability of concrete and cement mortar for use in basements, roof slabs, screeds and water tanks.	1 kg/bag of total cementitious material



Product	Description	Typical Uses	Dosage/Coverage/Yield
► Plastering Aid & Concrete Block Admixture			
Cebex 112 100 ml, 1, 5, 20 and 200 litres	Mortar plasticiser and plastering aid.	To improve workability and trowelling properties of sand/cement mortar during application and to minimise shrinkage cracks.	100ml/bag of total cementitious material
Conplast SD110 5, 20, and 200 litre	Cement saver for concrete blocks.	Conplast SD110 is used to reduce material cost by reduction in cement without loss of strength or by increasing strength without additional cement. To get high early strength to improve productivity.	0.40 litres/100 Kg of total cementitious material
► Sprayed Concrete Accelerators			
Sprayset HBL/HBL(M) 250 kg and 280 kg	Non-caustic shotcrete admixture sprayset HBL meets the requirements of ACI 506-56 (recommended practice for shotcreting - concrete society specification for sprayed concrete).	Used to enable a high build of sprayed concrete, shotcrete and gunite. To provide set acceleration and reduce rebound loss.	5.0 litres/100 kg of total cementitious material
Sprayset HBP 25kg.	Powder shotcrete admixture. sprayset HBP meets the requirements of ACI 506-56 (recommended practice for shotcreting - concrete society specification for sprayed concrete).	Used to enable a high build of sprayed concrete, shotcrete and gunite. To provide set acceleration and reduce rebound loss.	2 to 5 kg/100 kg of total cementitious material
Sprayset SL 250kg and 280kg.	Sprayed concrete admixture. Stiffening of concrete occurs approximately after 10 seconds.	Used in spray concrete, shotcrete and gunite processes where rapid setting is required.	1.0 to 5.0 litres/100 kg of total cementitious material



Surface Treatments



Curing membranes & release agents to improve the surface finish of concrete.

Product	Description	Typical Uses	Dosage/Coverage/Yield
► Curing Compounds			
Concure WB 5, 20 and 200 litre (Available in white & Clear)	Low viscosity wax emulsion, water based concrete curing compound. Complies to ASTM C 309-90.	For spraying on freshly cast concrete, or newly exposed concrete surfaces after removal of form work, to form a temporary membrane which will retain sufficient moisture for effective curing to take place.	3-5 m ² /litre
Concure LP90/LP90M 20 and 200 litre	High efficiency polymer based film forming curing agent	Suitable for all general concreting applications and of particular benefit for large area concrete surfaces, such as airport runways, roads and bridgeworks, Pavement Concrete	The recommended coverage rate is between 3.5 and 5.0sq.m / litre (0.200 to 0.285 litres/ sq.m).
Concure 1315 5, 20 and 200 litre (Available in white & Clear)	Eco-friendly, acrylic resin based, clear curing compound, sealer and dust proofer. Complies to ASTM C1315 Type 1, class A	Provides a clear curing, sealing and dust proofing compound, which can be used in a wide range of applications: <ul style="list-style-type: none"> • High rise construction to eliminate water curing • Floors, warehouses, slabs and columns • Self-curing, primer system to subsequent coverings 	5-7 m ² /litre
► Shutter Release Agents			
Reebol 5, 20 and 200 litre	Stain free, concrete mould release agent.	To provide quick, clean and easy stripping of moulds and form work and ensure high quality fair faced and stain free concrete.	Reebol 20-60m ² litre* depending on porosity & texture of mould surface.
Reebol Emulsion Xtra 5, 20 and 200 litre	Concentrated and emulsified chemical mould release agent.	For easy stain free removal of concrete moulds and form work of all types, particularly where wooden form work is used and de moulding and stripping times exceed 24 hrs.	1 litre of Reebol emulsion Xtra when diluted with 6 litres of water will cover 80-180m ² depending upon the nature of the substrate.
► Multipurpose Cleaning Agent & Rust Removers			
Reebaklens 0.5, 1.5 and 20 litre	Hardened concrete remover, cleaning and etching agent. Also used as tile cleaning agent.	Removes hardened concrete from tools, machinery and equipment, suitable for etching of concrete floors and surfaces prior to application of resin or other surface coating. Also used as tile cleaning agent.	Refer data sheet
Reebaklens RR 0.5, 1 and 5 litre	Rust remover, cleaning and etching agent	Reebaklens RR is used as a rust remover from steel bars prior to encasing in concrete / micro concrete. It can also be used on other steel surfaces prior to coating with epoxy systems.	Approx. 2.0 - 2.5 m ² /L



Grouts & Anchors

A complete range of high precision cementitious & epoxy based grouts for machine foundation, bridge bearings, rail grouts & precast industry.

Product	Description	Typical Uses	Dosage/Coverage/Yield
► Cementitious Grouts			
Conbextra GP1 25 kg	Non shrink cementitious grout. Complies to ASTM C 1107 Type A.	Static load applications like steel column foundation, pipe rack foundations and equipments with only static load.	12.5 Ltrs / 25 kg bag @ Flowable Consistency
Conbextra STD 25 kg	Free flow, high strength, non-shrink, cementitious precision grout	The grouting of base plates of turbines, compressors, boiler feed pumps etc., It can also be used for anchoring a wide range of fixings. These include masts, anchor bolts and fence posts.	The approximate yield per 25 kg bag for different consistency is W/p 0.13 Yield (litres) 12.5.
Conbextra GP2 25 kg	Plastic shrinkage compensated, high flow, high strength cementitious grout. Complies to ASTM C 1107 Type A.	Machine foundation grout with both Static & dynamic loads, bridge bearings, precast construction etc.	13.3 Ltrs / 25 kg bag @ Flowable Consistency
Conbextra GP2 N 30 kg	Plastic shrinkage compensated, high flow, high strength cementitious grout with low exothermic heat. Complies to ASTM C 1107 Type A.	Machine foundation grout with both Static & dynamic loads, bridge bearings, precast construction etc.	15.8 Ltrs / 30 Kg bag @ Flowable Consistency
Conbextra GP3 30 kg	Dual shrinkage compensated, high strength, high flow cementitious grout. Complies to ASTM C 1107 Type C.	Machine foundation grout with both static and dynamic loads, bridge bearings etc.	15.5 Ltrs / 30 Kg bag at Flowable Consistency
Conbextra GP4 25 kg	Dual shrinkage compensated, high strength, high flow cementitious grout. Complies to ASTM C 1107 Type C.	Machine foundation grout with both static and dynamic loads, bridge bearings etc.	12.7 Ltrs / 25 Kg bag at Flowable Consistency
Conbextra GP5 25 kg	Dual shrinkage compensated, ultra high strength, high flow cementitious grout. Complies to ASTM C 1107 Type C.	Machine foundation grout with both static and dynamic loads, bridge bearings etc.	11.5 Ltrs / 25 Kg bag at Flowable Consistency
Conbextra TS 25 kg	Plastic shrinkage compensated, high flow, high strength cementitious grout with low exothermic heat and suitable for grouting thickness up to 250 mm. Complies to ASTM C 1107 Type A.	Suitable for grouting sections with section thickness up to 250 mm.	12 Ltrs / 25 kg bag @ Flowable Consistency
Conbextra HF 25 kg	Dual shrinkage compensated, ultra high flow, high strength cementitious grout. Complies to ASTM C 1107 Type C.	Machine foundation grout with both Static & dynamic loads, bridge bearings etc.	13.25 Ltrs / 25 kg bag @ Flowable Consistency
Conbextra AT 25 kg	Plastic shrinkage compensated, high flow, high early & ultimate strength cementitious grout. Complies to ASTM C 1107 Type A.	Machine foundation, bridge bearings, precast construction etc.	12.5 Ltrs / 25 kg bag @ Flowable Consistency
Conbextra HES 15 kg	Plastic shrinkage compensated, high flow, high early & ultimate strength cementitious grout. Complies to ASTM C 1107 Type A.	Machine foundation grout, bridge bearings, precast construction where high early strength is the prime criteria.	9 Ltrs / 15 Kg Bag @ Flowable Consistency
Conbextra UHS 25 kg	Plastic shrinkage compensated, high flow, high early & ultimate strength cementitious grout. Complies to ASTM C 1107 Type A.	Machine foundation grout, bridge bearings, precast construction etc.	12 Ltrs / 25 Kg Bag @ Flowable Consistency
Conbextra HR 25 kg	Heat resistant cementitious grout. Complies to ASTM C 1107 Type A.	Machine foundations subjected to heat exposure.	12 Ltrs / 25 Kg Bag @ Flowable Consistency
Conbextra BB72 IN 25 kg	Free Flow, Non Shrink, High Strength Cementitious precision grout	Conbextra BB72-IN is designed for precision grouting of foundations with heavy loads. Product is specifically suitable for grouting joints in of precast concrete wind turbine towers.	Fluid: 13.15 Ltrs / bag
Conbextra BB92 O 25 kg	Sulphate resistant high early and ultimate strength onshore wind mill grout. Complies to ASTM C 1107 Type A.	On shore windmill grout.	11.5 Ltrs / 25 Kg Bag @ Flowable Consistency
Conbextra BB92 IN 25 kg and 500 kg jumbo bag	Free flow, High strength, Non Shrink, Cementitious precision grout	Grouting base frame of metal wind turbine foundations and also horizontal & vertical joints of precast wind turbine towers, filling of voids in narrow or congested spaces.	Refer datasheet
Conbextra UW 25 kg	Anti washout, non shrink, high strength cementitious under water grout. Complies to ASTM C 1107 Type A.	Under water repairs.	14.5 Ltrs / 25 Kg Bag @ Flowable Consistency

Product	Description	Typical Uses	Dosage/Coverage/Yield
► Epoxy Grouts			
Conbextra EP10 1 Ltr	Low viscosity epoxy injection grout.	Structural crack repair.	Refer datasheet
Conbextra EP10(M) 1.5 Ltr	Moisture insensitive epoxy resin injection material.	Conbextra EP10(M) is a two part epoxy resin system for grouting gaps ranging from 0.25mm to 9mm.	Refer datasheet
Conbextra EP 75 14 Ltrs	High flow, high early & ultimate strength epoxy grout suitable for grouting thickness up to 75 mm. Complies to ASTM C 1181.	Machine base grouting of heavy duty compressors, rail plates in ballast less track.	Refer datasheet
Conbextra EP 300 14 Ltrs	Low exotherm epoxy grout. Suitable for grouting thickness up to 300 mm. Complies to ASTM C 1181.	Machine base grouting of heavy duty compressors, rail plates in ballast less track with grouting section thickness up to 300 mm.	Refer datasheet
Conbextra EBG (M) 3 Ltrs	Epoxy resin bearing grout. Complies to ASTM C 1181.	Elastomeric Bearing Pads, bridge bearing plates.	Refer datasheet
► Chemical Anchors			
Lokfix 0.5 & 2.5 Ltrs	Polyester resin grout. Complies to BS 4551 BS 5080 & BS 2782.	For high strength corrosion resistant anchoring of bolts and bars from 12-50 mm diameter into concrete, rock, masonry or brickwork where high speed of installation and early application of load is required.	Refer datasheet
Lokfix E77 585ml cartridges	High performance pure epoxy 3:1 resin cartridge system, for anchoring reinforcement and fixings into a variety of substrates	For high strength corrosion resistant anchoring of bolts and bars from 12-50 mm diameter into concrete, rock, masonry or brickwork where high speed of installation and early application of load is required.	Refer Product Technical data sheet
Lokfix E55S 300ml cartridges	Styrene free vinyl-ester resin based cartridge system, for anchoring reinforcement, fixings into a variety of substrates	Fixing of post installed reinforcement Anchoring of threaded rod fixings For horizontal, vertical and overhead application Bonding and surface crack sealing applications	Refer Product Technical data sheet
Lokfix E45T 300ml cartridges	Vinylester - Styrene free foil tube cartridge - tropical grade base cartridge system, anchoring reinforcement and lightweight fixings into a variety of substrates.	Fixing of post installed reinforcement Anchoring of threaded rod fixings For horizontal, vertical and overhead application Bonding and surface crack sealing applications	Refer Product Technical data sheet
Lokfix RA 1 & 5 Ltrs	Polyester resin grout for anchoring reinforcement and fixings into Rocks	Fixing of bolts and bars from 10-40 mm diameter into the rock. Permanent installation of reinforcement bars, foundation bolts, base plates, barriers and safety fences, waler beam anchoring, ground anchors for towers, cranes, dock sills etc., in rocks.	Refer Product Technical data sheet
► Cement Grout Additives			
Cebex 100 225 g	Plasticised expanding grout admixture. Complies to BS: 8110 Part 1-1985, Section 8.9.4.6.	Cebex 100 is an admixture for cementitious grouts where a reduced water/cement ratio and positive expansions are required. Applications include bed grouting, duct grouting, non-shrink infilling and jointing.	Refer datasheet
Cebex 200 225 g	Plasticising and hydrogen free expansion grout admixture. Complies to BS : 5075.	Cebex 200 is an admixture for cement grouts where a reduced water / cement ratio and positive expansion are required. Applications include bed grouting, duct grouting, non-shrink infilling and jointing.	Refer datasheet
Cebex EN 225 gm packs	Plasticising and hydrogen free expansion grout admixture	Used an admixture for cement grouts where a reduced water / cement ratio and positive expansion are required. Applications include bed grouting, duct grouting, non-shrink infilling and jointing.	Dosage best determined by site trials
Conbextra Cable grout 225 kg bags	Pre-bagged, non-shrink cementitious grout for post tensioned cables	Post tensioned cable ducts and Prestressed cable ducts	Yield 16.5 litres / 25 kg bag (approx)
Conbextra Cable grout HS 225 kg bags	Pre-bagged, non-shrink cementitious grout for post tensioned cable duct grouting	Conbextra Cable Grout HS is used for grouting of PT cable ducts. The product can also be used for grouting ground anchors with small gaps	Yield 15.5 litres / 25 kg bag (approx)

Concrete Repairs

Primers, cement and resin based materials to reinstate defective concrete.

Product	Description	Typical Uses	Dosage/Coverage/Yield
► Cementitious Putties & Plugging Compounds for Non-Structural Cracks & Pin Holes			
Renderoc CS 1 kg	Single part, non-shrink, cementitious, crack sealer for plaster, masonry and concrete.	For sealing cracks on plaster, masonry and concrete substrates.	1Kg of mixed material covers 30 RM for a groove size of 6 mm X 6 mm
Renderoc CF 1, 5 & 25 kg	Crack filler.	For sealing cracks on plaster, masonry and concrete substrates.	1Kg of mixed material covers 30 RM for a groove size of 6 mm X 6 mm
Renderoc FC 20 kg	Single component polymer modified cementitious pinhole filler.	For application to minor imperfections in concrete and masonry surface up to 0-3 mm range.	4 m ² @3 mm thickness for 20 kg bag
Renderoc Plug 1 kg & 5 kg	Rapid setting cement based water leak plugging mortar.	For the rapid temporary patching and plugging of concrete segments, concrete and brick tunnel linings, sewage systems, below ground access chambers.	—
► Cementitious Repair Mortars			
Renderoc HB2 Powder 18 kg Liquid 0.54 kg	Light weight structural grade prepacked cement mortar.	Reinstatement of spalled concrete members like beams, slab, soffits etc.	1.3 m ² at 10 mm thickness per 18 kg bag
Renderoc S2 Powder 25 kg Liquid 0.25 kg	Structural grade prepacked cement mortar.	Reinstatement of spalled concrete members like beams, columns, walls etc.	1.3 m ² at 10 mm thickness per 25.25 kg bag
Renderoc SP 40 25 kg	Single component, fibre reinforced shrinkage compensated, polymer modified structural grade repair mortar (M 45 grade).	Renderoc SP40 is suitable for wet spraying and hand application in a wide variety of repair applications, and is particularly well suited to vertical and overhead repairs. Typical applications would include, but not be limited to, repairs to irregular profiles. repairs to any structural concrete members.	Approximately 13.5 litres per 25 kg bags
Renderoc HS Xtra 25 kg	Single component, fibre reinforced, high strength, shrinkage compensated, polymer modified structural grade repair mortar (M 80 grade).	Renderoc HSXtra is suitable for hand and spray application for repairs where high load bearing is required. Typical applications would include, but not be limited to Vertical and overhead repairs to restore 'covercrete'. General concrete and masonry repairs. Voids greater than 10 mm deep. Repairs to honeycombing. Larger scale repairs where form work cannot be erected.	13.4 litres per 25 kg bags
Renderoc DS 40 25 kg	Single component, shrinkage compensated, structural grade, dry spray applied polymer modified, repair mortar for concrete (M 45 grade).	Renderoc DS40 is designed for large area repairs such as bridges, tunnels, retaining walls, dams, refurbishment of columns etc.	Approx. 12.5 litres / 25 kg bags (approx. 80 bags/m ³)
► Cementitious Under Water Repair Microconcretes			
Renderoc UW 25 kg	Anti washout, high strength, shrinkage compensated, free flow, cementitious micro concrete for under water concrete repairs (M50 grade).	For free flow or pumped material to repair deteriorated under water or tidal zone concrete structures without significant washout of the cement paste, applications include quay pillars, bridge columns, concrete piling and dam.	14.5 litres /25 Kg at W/P 0.22
► Concrete Floor & Pavement Repair Mortars			
Superpatch 25 kg	Cementitious repair system for concrete floors.	For patching and replacement of worn areas, filling of holes or depressions in concrete floor slabs in factories, godowns, commercial or domestic buildings.	13 litres/25 kg
Patchroc 25 kg	Shrinkage compensated, medium fast setting, cementitious repair mortar for industrial floors, pavement quality concrete (PQC) and airport aprons (M40 grade).	Rapid reinstatement of large areas of concrete pavements, roadways, factory floors & car parks.	12.6 litres/25 kg
Renderoc RSXtra 15 kg	Dual shrinkage compensated, rapid setting, repair concrete for pavement quality concrete (PQC) (M45 grade).	For the emergency reinstatement of damaged or deteriorated concrete. For both internal and external use.	7.5 litres / 15 kg bag

Product	Description	Typical Uses	Dosage/Coverage/Yield
► Cementitious Microconcretes for Repairs & Structural Strengthening			
Renderoc RG(L) 25 kg	Shrinkage compensated, free flow, general purpose, micro concrete for concrete repairs (M 35 grade).	Elements, particularly where access is restricted and where vibration of the placed material is difficult or impossible. Suitable for various structural strengthening measures such as filling honeycombs and cracks.	Approximately 13.5 litres per 25 kg bag
Renderoc RG(S) 25 kg	Shrinkage compensated, free flow, structural grade micro concrete for concrete repairs (M45 grade).	Concrete elements, particularly where access is restricted and where vibration of the placed material is difficult or impossible. Suitable for various structural strengthening measures such as encasement build-ups, etc.	Approximately 13.7 litres per 25 kg bag
Renderoc RG 25 kg	Shrinkage compensated, free flow, structural grade micro concrete for concrete repairs and strengthening (M 50 grade).	For repair to damaged reinforced concrete elements particularly where access is restricted and where vibration of the placed material is difficult or impossible. Suitable for various structural strengthening measures such as encasements build-ups etc.	13 litres/25 Kg @ W/P 0.16
Renderoc RG(M) 25 kg	Shrinkage compensated, free flow, high strength, micro concrete for repairs and strengthening (M 60 grade).	Renderoc RG(M) is used for repairs to damaged reinforced concrete elements, particularly where access is restricted and where vibration of the placed material is difficult or impossible. It is suitable for various structural strengthening measures such as encasement build-ups etc.	12.5 litres /25 Kg at W/P 0.16
Renderoc LA Xtra 25 kg	Dual shrinkage compensated, free flow, micro concrete for repairs and strengthening of concrete (M 60 grade).	Renderoc LAXtra is suitable for mass infill to structural repairs in all types of load bearing situation. Typical applications would include, but not be limited to, the following: Repairs to columns suffering from major loss of section soffit repairs where heavy load bearing is required. Repairs to restricted access areas, where use of hand applied mortars would prove impractical. Repairs requiring high fluidity e.g. heavily congested steel or repairs into re-entrant angles/concealed voids. Any repairs requiring significant levels of load bearing.	12.25 litres per 25 kg bags
Renderoc RG SPL 25 kg	Shrinkage compensated, free flow, high strength micro concrete for repairs and strengthening of concrete (M 75 grade).	For repairs to damaged reinforced concrete elements, particularly where access is restricted and where vibration of the placed material is difficult or impossible. It is suitable for various structural strengthening measures such as encasement build-ups, jacketing etc.	Approximately 12.0 litres per 25 kg bags
Renderoc RG 65 25 kg	General purpose, Free flow, High strength, Non shrink, Cementitious Micro-Concrete.	Renderoc RG 65 is used for repairs to damaged reinforced concrete elements, particularly where access is restricted and where vibration of the placed material is difficult or impossible. It is suitable for various structural strengthening measures such as encasement build-ups, jacketing, pile top encapsulation resin system, etc.	13 Ltrs per 25 kg bags
► Epoxy/Polyester Resin Based Repair Mortars			
Nitomortar S 10 litres	High strength, high performance epoxy resin based repair mortar (60 MPA).	Repair of concrete, masonry, etc, damaged due to chemical attack and for repairing areas subject to tensile loads.	2 m ² at 5mm thickness / pack
Nitomortar 30 8 litres	Epoxy resin based repair mortar (40 MPA).	For lining ETP, STP and chemical tanks along with suitable protective coating and for repairing dams (pointing) spillways etc. where abrasion resistance is required with high strength.	2.67 m ² at 3mm thickness
Nitocote VF 1/2 and 1 litre	Three component, epoxy resin based putty for sealing cracks and blow holes on concrete floors and walls.	For filling blow holes, making good slightly damaged concrete, eliminating minor irregularities on floors and walls prior to applying Nitoflor and Nitocote epoxy coatings.	1 m ² at 1 mm thick/litre
Nitomortar FC 4 litres	Two component, epoxy resin based fairing coat cum filler for surface repro filing and sealing cracks & pin holes.	Filling pinholes prior to over coating Nitocote or Nitoflor products.	1 litre / m ² at 1 mm thickness
Nitomortar PE 5 litres	Polyster resin based jointing and repair compound.	Repair to concrete bedding units to be used on the same day or where ultra high strength is required-building elements, concrete rises, floor joint damage, worn stairways, blowholes and erosion pockets in concrete faces, setting window door frames and bedding precast units.	Refer datasheet
Expocrete EC (Formerly Nitocote EC) 13.5 litres	High strength epoxy concrete.	The product is designed for horizontal applications. it is ideally suited for fast and permanent reinstatement of defective concrete surfaces in bridges, dams, foundations, slabs, joints in highways, concrete runways.	13.5 litres pack aggregate (not supplied) has to be added at site



Product	Description	Typical Uses	Dosage/Coverage/Yield
► Epoxy Resin Based Products for Under Water Concrete Repairs			
Exposeal UW (Formerly Nitoseal UW) 2.4 litres & 24 litres	Structural grade, epoxy resin based putty for sealing surface cracks and joints on concrete.	For filling of blow holes, sealing cracks for under water grouting, eliminating micro irregularities on concrete surface in damp and under water conditions.	1 litre / m ² @ 1mm thickness
Expocrete EUW 13.5 L (27.75 kg)	High strength, under water, flexible epoxy concrete.	For the fast and permanent reinstatement of concrete, particularly where high strength, abrasion, impact and chemical resistance are required. The product is designed for under water applications. It is ideally suited for reinstatement of defective concrete surface in bridges, dams, foundations, slabs, joints in highways, concrete runways and for use as a bedding material.	13.5 L (27.75 kg) packing
Conbextra EUW 1.5 litre	Water insensitive, epoxy material.	For use in grouting gaps ranging from 0.25mm to 10mm as an epoxy injection material. As an under water epoxy fillerised grout in conjunction with quartz filler. As an under water epoxy repair mortar in conjunction with quartz filler.	Refer datasheet
► Fibre Reinforced Polymer Composite Wrapping & Laminate Systems for Structural Strengthening (FRP)			
Nitowrap GW Nitowrap CWS 100m length / roll Width 0.5m x 100mm.	Glass and carbon fibre fabric reinforced, high performance, high strength, composite fibre wrapping system for structural strengthening.	Used for strengthening columns, beams, slabs load bearing structures particularly where improvement to shear strength and deformation characteristics are required. It is ideal for seismic retrofitting also typical applications include piers, columns, bridges, towers, pipes, chimneys, tunnels and other structures etc.	Contact Fosroc
Nitowrap CF(CS) 1 Roll Size of 1m x 50m.	High Strength, Non Corrosive, Carbon Fiber Reinforced Cementitious Matrix System.	Typical applications include, but are not limited to, dynamic and dead load increases, seismic strengthening, strengthening of structures for flexure, shear and axial loads.	Contact Fosroc
Nitoplate CPS 100m length / roll Width: 25, 50, 80, 100mm in 1.2 & 1.4mm thick.	High performance, high strength, corrosion resistant pultruded carbon fibre plates /laminates for structural strengthening.	For increasing load carrying capacity of structural members particularly where increase in live load/ traffic loads is expected.	Contact Fosroc
Nitoplate Crackfix (300 x 10 x 1.5mm) 25 Nos per pack.	High Strength Carbon Fibre Plates for stitching of cracks in concrete and masonry.	Majorly used but not limited to applications as mentioned, cracks in podium slabs, cracks on roof slabs prior to installing waterproofing system, settlement/Cracks in masonry walls, masonry arch bridges, cracks in shells, domes, etc.	Contact Fosroc
► Polyurethane Injection Grouts			
Nitofill UR63 1, 5, 20 Kg	Two part solvent-free, low viscosity polyurethane resin system. When mixed in the proportions supplied reacts to form a tough, slightly flexible resin.	For injection into cracks in concrete or masonry, either wet or dry to form an elastic sealing. When used in conjunction with Nitofill WS60 it provides an effective system for crack sealing in wet condition.	Refer datasheet
Nitofill WS60 1, 5, 20 Kg	Two component solvent free Polyurethane, Rapid foaming and setting resin for stopping flow of water.	For injection into cracks in concrete to temporarily stop the flow of moving water. When used in conjunction with Nitofill UR63 it provides an effective system for crack sealing in wet condition.	Refer datasheet
Nitofill PU 1F 10 Kg / pail	Single Component, Rapid Foaming and Setting Hydrophobic Polyurethane	Areas of application includes defective concrete (cracked or honeycombed), concrete joints, limestone, brick construction, pipe intrusions, waste water tanks, tunnels, dams, subway(metro), sewers, manholes, soil stabilization, utility boxes, etc.	Refer datasheet
► Ready Plaster			
Renderoc Ready Plaster 40 Kg	Pre-packed cement based ready to use plaster.	For external and internal plastering - on walls, ceilings, columns and beams. All blocks masonry works. Brick and stone masonry works.	14 to 15 sqft per bag of 40 kg at 10 - 12 mm thickness. Coverage may vary depending on the substrate condition
► Damp Proof Coating			
Nitoproof Damp Protect 15 Kg , 5Kg	High performance two component elastomeric cementitious damp-proof coating.	As a damp proof coating on to plastered surfaces before wallputty is applied.	The approximate coverage at even consistency is 15 to 16 sq.ft /kg /coat
► Wallputty			
Renderoc Wallputty 1 kg, 5 kg, 20 kg, & 40 kg pack	Renderoc Wallputty is a perfect blend of white cement, special polymers, and minerals that protects & smoothens walls.	Interior & exterior walls, Concrete blocks and panels, Precast walls and ceilings	Refer datasheet

Industrial Flooring



A complete range of floor surfacing products designed to enhance the performance characteristics of both new & old concrete floors.

Product	Description	Typical Uses	Dosage/Coverage/Yield
► Floor Hardeners			
Nitoflor Hardtop / Hardtop STD 25 kg	Non metallic, dry shake on floor hardeners.	Ideally suited for all industrial and commercial floors subjected to the heavy abrasion / wear suitable for flooring applications in heavy engineering industry, warehouses & car parking.	Application rate kg/m ² Heavy Duty 7.0 Medium Duty 5.0 Light Duty 3.0
Nitoflor Lithurin (M) 20 & 200 litres	High performance, liquid floor hardener & densifier.	For surface hardening of new and old concrete to prevent dust generation and to reduce permeability. Typical areas of application include warehouses, factories, platforms on both new and existing concrete surface where epoxies are not desirable.	10 - 12 m ² / litre
► Underlays			
Nitoflor TF 5000 12 litres	3 - 6 mm Colored epoxy resin screed with excellent chemical and abrasion resistance.	The system offers an extremely hard wearing and impact resistant floor. Suitable for applications in areas subjected to heavy impact and abrasion in heavy engineering industries, loading & unloading bays & car park ramps.	2.4 m ² / Pack @ 5 mm
Nitoflor EU5 15 litres	1.5 mm - 5 mm thick self-smoothing epoxy based underlay.	A self smoothing epoxy screed recommended as an underlay prior to application of epoxy/PU based floor toppings.	7.5 m ² / Pack @ 2 mm thickness
► Coatings			
Nitoflor FC 140 4.5 litres	Epoxy resin based solvented floor sealer with high chemical & abrasion resistance.	The recommended uses are in production assembly areas, dairies, soft drinks production and bottling plants, breweries, kitchens, showrooms, aircraft hangars, dust proof rooms etc. Also used as Colored sealer coat for screeds like TF 5000.	45 m ² / pack / coat @ 45 microns DFT Recommended in minimum two coats @ 90 Mic. DFT
Nitoflor FC145 4.5 litres	High build epoxy resin based solvented floor coating with high chemical & abrasion resistance.	The recommended uses are in production assembly areas, dairies, soft drinks production and bottling plants, breweries, kitchens, showrooms, aircraft hangars, dust proof rooms etc. Also used as coloured sealer coat for screeds like TF 5000.	4 m ² / ltr @ 250 Microns WFT per coat recommended application two coats
Nitoflor FC 150 4.5 litres	High build solvent free epoxy resin based floor coating.	Provides a high build, hard wearing, chemical and abrasion resistant floor finish.	5.0 m ² / litre @ 200 microns WFT recommended application 400 microns in two coats
Nitoflor FC 400 UH 4.5 litres	Highly chemical resistant, hybrid polyurethane based floor coating.	Product provides an extremely hard wearing & chemical resistant floors specifically suitable for cold storage with temperature of up to - 5 deg cel, dairies, chemical processing units, bottling plants & waste water treatment plants.	11.25 m ² / pack @ 400 microns DFT in two coats
Nitoflor EPW100 4 litres	Water based epoxy floor coating.	Ideal for industrial or commercial locations where a hard-wearing, hygienic, dust-free environment is important. Particularly useful when moisture content in concrete is more than 5%.	20-22 m ² / pack / per coat @ 180 microns WFT (100 microns DFT)
Nitoflor PUW100 4 litres	Water based polyurethane coating.	Ideal for industrial or commercial locations where a hard-wearing, hygienic, dust-free environment is important. Particularly useful when moisture content in concrete is more than 5%.	10 m ² / litre / coat @ 100 microns WFT (45 Micron DFT)
► Toppings			
Nitoflor SL Range SL500 - 4.5 litres SL1000 - 6 litres SL2000 - 15 litres SL3000 - 15 litres SL4000 - 15 litres	0.5 - 4 mm thick self smoothing seamless epoxy floor toppings.	Ideal for industrial floors where a hard wearing, hygienic, dust free environment is important, Useful for hospital clean rooms, electronic assembly plants, engineering & manufacturing industries.	Refer datasheet



Product	Description	Typical Uses	Dosage/Coverage/Yield
Nitoflor SL2050 12 litre	2 -5 mm thick Flow applied, water miscible, damp - tolerant epoxy resin based floor topping.	To provide a smooth, dense, matt finish, easily cleaned surface resistant to oils and liquids. Suitable for floors in warehouses, garages, pharmaceutical industries and medical laboratories, food beverages industries, light industries and food processing areas.	6 Sqm per pack at 2 mm thickness
Nitoflor SL Conductive / Dissipative Top coat - 15 litres Under coat - 2.4 litres	2 mm thick Epoxy resin based static conductive/ dissipative seamless floor toppings.	For use in areas where a static conductive or a static dissipative floor is required as a measure to control static electricity. Useful for electronic components assembly areas, painting booths of automobile plants, explosive material booths of automobile plants, explosive material manufacturing units, operation theatres etc.	Conductive undercoat : 4.0 Sq.m/litre, Dissipative undercoat : 5.5 Sq.m/litre Conductive/Dissipative Nitoflor Conductive : 7.5 Sq.m/15 litre pack @ 2mm thickness, Nitoflor Conductive/Nitoflor Dissipative
Nitoflor EPU Conductive / Nitoflor EPU Dissipative Topcoat 15 litre pack Undercoat 2.4 litre pack	Epoxy Polyurethane resin based static Conductive/Dissipative system self-smoothing floor toppings	Nitoflor EPU Conductive/ Nitoflor EPU Dissipative system have been designed for use in areas where a static Conductive or a static Dissipative floor is required as a measure to control static electricity. Typical areas of use include electronics manufacture and assembly, clean rooms, computer rooms, hazardous dust and chemical environments and hospital operating theatres.	Nitoflor Conductive undercoat : 4.0 Sqm/litre Nitoflor Dissipative undercoat : 5.5 Sqm/litre Topcoat: Nitoflor EPU Conductive/ Nitoflor Dissipative : 7.5 m ² /15 litre pack @ 2mm thickness
Nitoflor EPU 2000 15 litres	2 mm thick epoxy polyurethane based floor topping.	Ideal for industrial floors where a hard wearing, hygienic, dust free environment is important, useful for hospital clean rooms, electronic assembly plants etc.	7.5 m ² /Pack @ 2 mm thickness
Nitoflor SL 2000 UB 15 Litres	Heavy duty polyurethane based flow applied.	Offers high resistance against impact, thermal shock, abrasion and chemicals. Resistance to several organic chemicals used in the food industry makes the system suitable for use in various food processing industries.	7.5 m ² /pack @ 2 mm thickness
Trafficguard UR 100 Multi coat - Refer datasheet	Skid resistant, waterproof flexible protection system for car park decks.	Trafficguard UR100 is a modified polyurethane based traffic deck system designed to provide an added level of protection to, new and existing, heavily trafficked areas such as car park decks, car park ramps, turning areas, entrance/exit areas & thoroughfares.	Refer datasheet
Trafficguard UR 150 Multi coat - Refer datasheet	Multilayer, hard wearing, anti skid car park deck coating.	Specifically recommended for Intermediate decks of Multilevel car parks and also for basement car parks.	Refer datasheet
Nitoflor SL 3000 UT 20.25 kg	4 - 6 mm thick PU cementitious self smoothing topping.	Product offers an extremely hard wearing floor with excellent adhesion to concrete substrates specifically suitable for industrial floors in food & beverage, engineering, dairies & pharma.	2.5 Sqm @ 4 mm thickness
Nitoflor RT6000UT 36.25 Kg	Resin rich, trowel applied heavy duty polyurethane floor screed.	Fosroc Nitoflor RT6000 UT is a heavy duty, trowel applied polyurethane floor screed designed with the highest order of durability to resist impact, abrasion, chemical attack and thermal shock. Its lightly textured finish makes the product ideal for both wet and dry processing environments.	2.23 m ² /pack at 6 mm 1.48 m ² /pack at 9 mm
Nitoflor Coving UT 18 kg	Trowel applied polyurethane coving mortar	Nitoflor Coving UT is a three-component trowel applied coving mortar. Typical application areas include food and beverage production, dairy processing, pharmaceutical, heavy duty traffic and engineering process areas.	1.8 - 2.0 kg/m ² /mm thickness
Nitoflor HB 200 UT 4.7 kg	Water-based high-build polyurethane coating	Fosroc Nitoflor HB200 UT is a three-part polyurethane coating designed as a sealer for Fosroc Nitoflor Coving UT mortar.	6 m ² per 4.75 kg pack per coat (WFT per coat ~200 microns)

Product	Description	Typical Uses	Dosage/Coverage/Yield
Polyurea FLM Part A Iso component : 200 ltr Part B AMINE component : 200 ltr	Fast setting, pure polyurea elastomeric floor coating.	Protective coating for flooring applications in a wide range of environmental conditions. Typical applications include: industrial floors, processing plants, food processing areas, workshops & production facilities, manufacturing plants & plant rooms.	1.5 – 3.0 ltrs per m ² @ 2mm thickness
Cemtop Micro T Part A – 20 kg Part B – 5 kg	1 – 5 mm thick, two component, flow applied, cementitious micro topping.	Thin layer industrial wearing course topping for use in areas that are subjected to both foot and vehicular traffic as an overlay., Typical uses are for reinstatement of existing floors or as a final wearing course on new concrete floors where specified floor tolerances have not been achieved.	1mm thickness (14.70 sq.m./Pack) 2mm thickness (7.35 sq.m./Pack) 3mm thickness (4.90 sq.m./Pack) 4mm thickness (3.67 sq.m./Pack) 5mm thickness (2.95 sq.m./Pack)
Cemtop PS5 Powder – 20 kg + (Treated water) (2.1 to 2.25 kg)	5 – 15mm thick, flow applied, polishable cementitious screed / topping.	Typical application would include: Retail stores, B2B stores in shopping malls. Refurbishment of old floor top surface ranging 5mm to 15mm thickness. Topping for floors of Schools, Offices, Hospitals, Residential & commercial floor with polishable topping. Can also be used for Supermarkets, restaurants, theatres, sports arena, garage etc.	5mm thickness (1.8 sq.m. / Pack)
Cemtop SLU15 Powder – 15 kg + (Treated Water) (2.7 kg to 3 kg)	5 – 15mm thick, flow applied, self-smoothing cementitious underlay only.	Internal and external working conditions for any industrial as well as commercial building floor. Large areas which need to be installed in a single day.	5mm thickness (1.45 sq.m. / Pack)
Cemtop OUL15 25 kg	5 – 15mm thick, one component, pre-blended, trowel applied cementitious screed, underlay / overlay.	All types of industries for floor thicknesses ranging from 5mm to 15mm, both for new floors or resurfacing.	5mm thickness (2 sq.m. / Pack)
Cemtop OUL40 25 kg	10 – 40mm thick, one component, pre blended, trowel applied, cementitious screed, Underlay / Overlay.	All types of industries where floor thickness requirement ranging 10mm to 40mm either for new flooring or refurbishment of old flooring.	10mm thickness (1 sq.m. / Pack)
Cemtop 250T 20 kg	3-6 mm thick self levelling cementitious floor levelling compound.	Underlay for soft flooring applications like carpet, vinyl, linoleum and also for wooden floorings.	4.0 m ² /20 Kg bag @ 3 mm thickness
Cemtop HD 20 kgs	Polymer modified, cement based, floor levelling compound - 4mm to 12mm	Typical applications would include: Forklift trafficked floors, Light industrial floors, Car parks, Walkways and pavements, High bay warehousing floors, Garage and workshops, Underlayment for vinyl sheet, tiles, carpets etc	Coverage 12 litres per 20 kg bag
Nitoflor ET Slurry 11 Litres	Heavy duty, flow applied, lightweight anti-skid surface dressing.	Nitoflor ET Slurry system provides a lightweight, yet extremely hard wearing anti-skid surface to a variety of substrates including steel, concrete and timber.	Refer datasheet



Protective Coatings

Coating to protect new & existing structures from attack by atmospheric chlorides & carbonation, or from exposure to harmful chemicals.

Product	Description	Typical Uses	Dosage/Coverage/Yield
▶ Anti-Corrosive Coatings			
Nitozinc Primer 1 & 5 litre	Two component, epoxy-zinrich corrosion protection primer for reinforcement and fabrication steel.	Nitozinc Primer is recommended for priming exposed steel reinforcement for use with Fosroc concrete repair mortars. The product actively resists corrosion within the confines of the repair location and avoids the generation of incipient anodes in immediately adjacent locations.	4 -5 m ² /litre
Nitocote AP35 1, 5 and 20 litres	Latex acrylic polymer based cementitious coating for corrosion protection of rebars prior to concreting.	Provides passivating protection matrix to reinforcing steel.	Approximately 8 - 10 m ² /litre depending on substrate
▶ Anti-Carbonation Coatings for Concrete			
Dekguard Standard 5, 20 litres	Aliphatic acrylate based protective and decorative exterior coating system for concrete and masonry for bridges, industrial structures and buildings.	Recommended as a protective and decorative coating for atmospherically exposed RC structures from long term protection. It is ideally suited for soffit of bridge decks, RC frames in high rise buildings and similar expensive infrastructures. Can be used both in repaired and new construction situations.	8 m ² /litre/coat
Dekguard S 5, 20 litres	High performance, pure aliphatic acrylate based protective and decorative exterior anticarbonation coating system for concrete and masonry for bridges, industrial structures and buildings.	Recommended as a protective and decorative coating for atmospherically exposed RC structures from long term protection. It is ideally suited for soffit of bridge decks, RC frames in high rise buildings and similar expensive infrastructures. Can be used both in repaired and new construction situations.	5 -6 m ² /litre/coat
Dekguard S300 5, 10 & 20 litres	High performance, high build, aliphatic acrylate based protective and decorative exterior coating system for concrete and masonry surfaces of bridges, industrial structures and buildings.	An ideal protective cum decorative coating for bridges, flyovers, underpasses, commercial and industrial building.	Refer datasheet
Dekguard WB300 4 and 20 litres	High performance, high build, elastomeric, protective cum decorative exterior anticarbonation coating system for concrete and masonry surfaces of bridges and buildings conforming to IRC SP 80: 2000 performance specifications.	Dekguard WB300 is designed to protect atmospherically exposed reinforced concrete structures above any splash zones from attack by chloride ions, oxygen and moisture ingress, especially where there is a danger of subsequent cracks appearing within the substrate.	Dekguard WB300: 2.2m ² /litre @ 300 micron DFT
Dekguard E2000 20 litre	High performance, highly elastomeric and crack bridging, water based, acrylic, anticarbonation protective and decorative exterior coating system for concrete surfaces of bridges and industrial structures.	Dekguard E2000 is designed to protect atmospherically exposed, reinforced concrete structures (above any splash zones) from attack by chloride ions, oxygen and moisture ingress, especially where there is a danger of subsequent cracks appearing within the substrate. Typical uses include, but are not necessarily limited to, the following : <ul style="list-style-type: none"> • New and existing structures • Concrete storage tanks - external surfaces • Bridge structures. 	1.6 to 2.5 m ² /litre/coat
▶ Chemical & Abrasion Coatings			
Nitocote EP140 4.5 litres	Two component, chemical and abrasion resistant, epoxy resin based, internal protective coating for steel and concrete surfaces.	A hygienic and chemical resistant coating for steel tanks, concrete walls, concrete and metal columns, sluices and ducts.	10 m ² /litre @ 100 microns WFT

Product	Description	Typical Uses	Dosage/Coverage/Yield
Nitocote EP140(M) 4 litres	Two component, epoxy resin and micaceous iron oxide based internal and external protective coating for steel and concrete surfaces.	A chemical and UV light resistant coating for steel tanks, concrete walls, bridges, concrete and metal columns, sluices and ducts.	10 m ² / litre/coat @ 100 microns WFT
Nitocote EN901 4 litre	High chemical resistant protective coating.	Suitable in waste water treatment plants, desalination plants, food processing plants, pulp and paper mills, power plants chemical manufacturing plants, fertilizer plants and petroleum refineries.	2.0m ² /litre @500 microns WFT per coat.
Nitocote EPW100 4 litres	Water based epoxy coating and sealer.	Suitable for applications to reservoirs, tanks, ducts, silos, water treatment works, breweries, dairies, kitchens and food processing plants.	20-22m ² /pack/coat @ 180 microns WFT (100 microns DFT)
Nitocote EP410 4 litres	Epoxy resin tank and surface lining material.	Provide protection against corrosion and aggressive agents. Suitable for internal coatings of concrete and steel structural elements.	16m ² @ 250 micros thickness WFT per pack
► Exterior Weather Proof Coating Systems for Buildings			
Nitocote Wall Guard White base : 20, 4 & 1 litres Dark base : 19, 3.8 & 0.95 litres Midtone base : 19, 3.8 & 0.95 litres	Elastomeric & decorative acrylic waterproofing coating for exterior walls.	Nitocote Wall Guard is an acrylic cementitious, elastomeric coating with inherent crack-bridging ability. Provides a high quality effective waterproofing cum decorative coating for exterior wall. Prevents dampness of external wall subjected to severe weather in coastal environment.	3 to 3.5 sqmt / litres in two coats
► Food Grade Protective Coatings			
Nitocote EP405 4 litres	Solvent free, food grade, epoxy resin coating for potable water retaining structures.	Suitable for potable water tanks, interior coating for large dia pipelines conveying potable water in food and beverage industries.	10m ² /litre/coat @ 100 microns
► Waste Water Treatment Protective Coatings			
Nitocote ET 550 18 litres	Epoxy-coal tar, amine adduct based, high build, coating.	Suitable for tanks above ground or in totally submerged conditions such as pipelines. Particularly useful in sewage works, effluent treatment plants, dock and harbour installations.	1.8-1.9 m ² /litre @ 350 microns DFT
Nitocote ET 140 4 litres	Low build epoxy-coal tar based protective coating.	Suitable for tanks above ground or in totally submerged conditions such as pipelines. Particularly useful in sewage works, effluent treatment plants, dock and harbour installations.	40 m ² /4 litre pack @ 100 microns WFT
Nitocote ET 402 10 litres	Solvent free, high build, epoxy-coal tar based protective coating for steel and concrete.	Provides protective coating for sea water tanks, intake channels, manhole drain & sewerage & effluent plants, jetty piles & docks.	5.0m ² /litre @ 200 microns WFT (per coat)
Nitocote NT 402 10 litres	Non tar Based Environmentally friendly epoxy resin coting.	Provides chemical and abrasion resistance to prevent corrosion of concrete surfaces for applications such as seawater tanks, channels, intakes, manhole linings, sewage works, effluent plants, chemical processing, foundation waterproofing, Jetties, piers and docks.	5.0 m ² /litre @ 200 microns WFT (per coat)



Product	Description	Typical Uses	Dosage/Coverage/Yield
► Chemical & Weather Resistant Protective Coatings			
Nitocote UR 512 4 litres	Two component, solvent based, aliphatic polyurethane, chemical and weather resistant.	Protective coating for steel & concrete surfaces.	10 m ² /litre/coat @ 100 microns/WFT
Nitocote PUW100 4 litres	Water dispersed, low VOC, eco-friendly, antifungal and weather resistant, polyurethane based internal and external protective coating cum sealer for concrete and masonry surfaces for food and pharma industries.	Nitocote PUW100 provides a pigmented sealing coat on to cementitious and concrete surfaces providing dust proof, easily cleanable and resistant to penetration of oils and liquids. The cured film is resistant to corrosion, chemicals and abrasion. Suitable for application in breweries, dairies, kitchens and food processing plants. The cured film forms a waterproof barrier and is non-toxic.	10m ² /litre/coat @ 100 microns WFT (45 microns DFT)
Nitocote PE 135 4 & 20 litres	Eco friendly, protective coating based on hydrophobic polyester resin.	Suitable as both protective coating, waterproof & curing compound. Ideal for protection to all concrete structures.	2.5m ² per litre @ 400 microns WFT /coat
Dekguard PU 4 litres	Two component aliphatic polyurethane exterior protective coating for concrete and steel structures.	Dekguard PU provides an easily cleaned chemical and UV resistant protective coating, and suitable for external waterproofing also.	10 sq.m /ltr/coat at 30 - 40 microns DFT
► Silane - Siloxane Hydrophobic Protective Coatings			
Nitocote SN522 1, 5 and 20 litres	Ready to use colourless silicone water repellent.	To provide a water repellent with improved self cleaning properties on exteriors of buildings, brick work, concrete, cement rendering, natural or cast stone.	4.5 - 9m ² /litre
Nitocote SN525 25 & 200 litres	Monomeric silane water repellent penetrant.	A deep penetrating treatment designed to protect concrete from both water and chloride ingress whilst still permitting water vapour transmission (breathe ability).	175 - 350ml / m ²
► Heat Resistance Protective Coatings			
Nitocote HR 260 5 and 20 litres	Heat resistant silicone acrylic protective coating system for industrial structures.	Used in wide range of industrial environments like oil refineries, chemical plants, power stations etc. Where temperature resistance is required up to 260 degree Celsius.	10 m ² /litre/coat @ 40 microns/DFT
Nitocote HT 120 4 litres	Solvent free, novel resin protective coating system for steel and concrete.	For high temperature service conditions up to 120 degree Celsius. It is particularly used to resist boiling water under continuous or partial service conditions.	5.0m ² /litre @ 200 microns WFT per coat

Product	Description	Typical Uses	Dosage/Coverage/Yield
► CECRI Technology Protective Coatings			
Nitocote EM300 4 litres	High performance moisture compatible corrosion resistant internal protective coating system for concrete and steel surfaces of NDCT and IDCT cooling towers - CECRI-CSIR technology.	Fosroc Nitocote EM 300 protective coating system has been exclusively developed by CECRI - CSIR, karikudi for protection of the internal concrete surface of the cooling towers - IDCT and NDCT of thermal power plants as per the performance requirements. The other areas of applications includes the Internal surface protection of water treatment plants, STPs, & ETPs and substructures of transportation bridges.	4 to 4.5 m ² / litre/coat @ 225 to 250 microns WFT.
Nitocote BCS 300 Multicoat system	Epoxy-polyurethane based multi-coat exterior chemical, corrosion and weather resistant protective coating system for concrete surfaces of bridges and industrial structures - CECRI-CSIR technology.	This is a chemical and UV ray resistant high build multicoat protective coating system for bridge decks, RCC girders and other atmospherically exposed RCC structures.	Refer datasheet



Joint Sealants

Flexible jointing material that acts as a seal or fills gap between two elements in order to accept thermal movements.

Product	Description	Typical Uses	Dosage/Coverage/Yield
► Civil Engineering Sealants			
Thioflex 600 GG Thioflex 600 PG 2.5 litres	Two part polysulphide sealant.	It is particularly recommended for sealing structural expansion joints in most civil engineering structures like building superstructures, subways, basements, floors and reservoirs.	Refer datasheet. Dependent on joint size.
Nitoseal MS600 Black - 3 litres Grey - 3 litres	One part, methyl silyl sealant for immersed conditions.	Nitoseal MS600 is suitable for sealing movement joints in buildings and civil engineering structures including joints that will be subject to intermittent or permanent immersion.	Refer datasheet
► Building Sealants			
Decofill 310ml cartridges	Fast setting flexible acrylic sealant.	<ul style="list-style-type: none"> • Wall / ceiling angles, cornices • Door and window frame surrounds • Fitted furniture • Skirtings • Staircases • Replacement window installations 	Refer datasheet
Nitoseal MS60 600ml sachet x 10 per box 380 ml cartridge x 20 per box	One part, general purpose building sealant	Suitable for sealing joints in concrete, brickwork, block work, perimeter sealing around doors & windows, non-trafficked floor joints	Refer datasheet
Nitoseal MS100 380ml cartridge 600 ml sausage	One part, primer less non-staining facade sealant	Brick masonry pre-cast panels, stone cladding, windows, doors, sealing of joints in and around concrete, fibre cement sheeting	Refer datasheet
Nitoseal MS300 600ml sachets	One part, floor joint sealant	Internal floors, external joints where abrasion resistance is required. Factory floors, sports, stadia terracing, shopping centres, warehouse, prisons	Refer datasheet
Nitoseal PU40 600ml sachet	One part, PU based building & expansion joint sealant.	Nitoseal PU40 is suitable for sealing joints in concrete, brickwork, block work, precast panels, stone cladding, perimeter sealing around doors and windows, and non trafficked floor joints.	Refer datasheet
Nitoseal PU 280 4.0 litres	Heavy duty epoxy urethane joint sealant.	For sealing internal floor joints subject to heavy industrial use in factories warehouses etc. particularly suitable for saw cut joints for long strip flooring and other nonmoving joints.	Refer datasheet
► Pavement Sealants			
Colpor 200/200PF Black - 3 litres Grey - 3 litres	Cold applied, high performance, fuel resistant, pitch and pitch free polyurethane sealant.	For sealing joints in concrete joints in concrete roads, concrete runways. Also suitable for sealing concrete joints where fuel and oil spillage might occur like runways, oil terminals, parkings and cargo areas.	Refer datasheet
► Polyethylene Filler Board & Backup Cord			
Expancell Available in different sizes.	Closed cell polyethylene joint sealant backup cord.	Expancell is a closed cell polyethylene foam supplied in circular cord lengths for use as a back up material for joint sealing applications. Expancell is available in a variety of sizes ranging from 6mm to 50mm in diameter suitable for the most commonly encountered joint dimensions.	Refer datasheet
Hydrocell XL 900 x 1800 mm sheets	High performance, cross linked, closed cell, nonabsorbent, polyethylene joint filler.	Hydrocell XL is a cross linked, non absorbent, semi-rigid, cellular polyethylene joint filler used for forming expansion joints in concrete, brickwork and block work. The product provides excellent support to sealants subject to hydrostatic pressure and is particularly recommended for water retaining or water excluding structures.	Refer datasheet

Waterproofing



Liquid applied & preformed membranes for waterproofing of structures.

Product	Description	Typical Uses	Dosage/Coverage/Yield
► Expansion Joint Membrane			
Expoband One 20m x 150mm x 1mm/2mm Roll 20m x 200mm x 1mm/2mm Roll	Flexible expansion joint membrane	Expoband One is a Flexible Polyolefin (FPO) membrane system which is designed to be bonded over expansion and movement joints in structures to prevent the passage of water. It is bonded in position using Nitobond PC40, two-part epoxy adhesive	Refer Product Technical Data sheet
► Waterproofing Acrylic Based Cementitious System			
Brushbond 23 kg Powder + 4 Lit Polymer 6 kg Powder + 1 Lit Polymer	Two component acrylic modified cementitious coating for concrete and masonry surface.	Provides seamless, flexible, waterproof coating suitable for use in water tanks, sunken slabs, sumps, roofs, basements to ensure water tightness.	Industrial pack: (23 kg Powder + 4 Lit Polymer) 16-18m ² @1 mm thickness
Brushbond RFX 6.71 & 20.088 kg	Elastomeric polymer modified cementitious waterproof coating.	Used for waterproofing of existing and new structure. Also suitable for all types of structures including those situated in coastal environment-Roof, basements, water tanks etc.	Industrial pack (15kg powder + 5.088kg litres Liquid) 12-14 m ² in two coats to achieve 1mm thickness
Brushbond Aqua Protect 11.75 kg + 3.92 kg = 15 kg 3.25 kg + 1.08 kg = 5 kg	Elastomeric cementitious coating with inherent crack-bridging ability.	Brushbond Aqua Protect provides a cementitious, elastomeric coating typical applications include: Potable water retaining structures & excluding structures ; Internal basement waterproofing ; Drainage culverts, bathrooms, shower rooms ; Foundations in contact with ground water under saline conditions.	5 kg pack - 2.75 m ² / pack @ 1 mm thickness 15 kg pack - 8.25 m ² / pack @ 1 mm thickness
Brushbond Roofguard 4 & 20 litres	High build fibre reinforced acrylic waterproofing coating for roofs.	Can be applied directly on existing concrete, brickbat coba, and screed concrete even without removal provided the substrates are sound enough for application of the coating avoiding the risk of damage to the old roof associated while removing the existing overlays. The product provides a seamless, tough durable water resistant coating which can withstand light pedestrian traffic and also has excellent weather resistance for exterior applications.	0.5 liter / m ² / coat
Brushbond Roofguard Premium 4 & 20 Litre	One-component cold - applied acrylic based modified polyurethane hybrid elastomeric coating used as heat reflective waterproofing coating for roof and terraces and also can be used as under tile waterproofing coating for wet areas.	It is acrylic based,easy to use, flexible and UV resistant. It is especially suited for exposed roof applications and under tile waterproofing for bathrooms, Serviced roofs, Flat or sloping roofs, Brick Bat Coba surface finish, China mosaic tile roof, Cement mortar screed.	20m ² per 20 litre pail (0.5mm dft) @ 1mm wft
Brushcrete 5, 10, 20 and 50 litres	Acrylic Polymer for concrete & masonry	Brushcrete polymer in conjunction with cement provides a seamless waterproof coating to concrete and masonry surfaces.	Refer datasheet
Hydroproof Xtra 0.5, 1, 5 & 20 litres	Single component polymer for cement based waterproofing.	Hydroproof Xtra polymer in conjunction with cement provides a seamless waterproof coating to concrete and masonry surfaces.	4.5 to 5.0 m ² / L / coat
► Crystalline Waterproofing System			
Brushbond TGP 15Kg	Crystalline capillary waterproofing system for cementitious substrates.	For waterproofing against the positive or negative sides of hydrostatic heads of water, for damp roofing, repairing cracks, plugging holes, sealing wall- floor joints and stopping active leaks.	1.0 to 2.0 kg/m ² per application (brush)
► Bituminous Waterproof Coating			
Nitoproof 100/120	Bituminous waterproofing coating.	External coating for below ground structures such as cellars waterproofing, protection of concrete against ground water ingress.	Nitoproof 100-4-6 m ² /litre Nitoproof 120-2.8-3.5 m ² /litre/coat
► Pitch Modified PU Waterproof Coating			
Nitoproof 600 Standard 19 litres	Liquid applied single component elastomeric waterproofing membrane.	For a wide range of waterproofing applications such as suspended floors, car decks, roof terraces, balconies, precincts, inspection pits, water retaining structures (not potable water), Sewage works and inverted roofs.	0.76 m ² /litre @1.3 mm
► Pitch Free PU Waterproof Coating			
Nitoproof 600PF 25 kg pails	Liquid applied elastomeric single component pitch free waterproofing membrane.	Application area such as roofs, podiums, balconies, small planters, bridge decks.	2.0 kg/m ² @ 1.5 mm
Nitoproof 650PU 20 kg pail Part A 20kg pail Part B	Polyurethane based Liquid applied two component elastomeric waterproofing membrane.	Typical applications will include roofs, podiums, balconies, floor slabs, suspended floors, inspection pits, after bridge decks basement retaining wall.	1.5kg/sqmt corresponds to dry film thickness of 1.07mm



Product	Description	Typical Uses	Dosage/Coverage/Yield
► Solar Reflective & Thermal Insulating Coating			
Brushbond TI Flexicoat 4 & 20 litres	Elastomeric acrylic polymer based solar reflective and insulating coating.	For use as a thermal insulation coating on roof slabs and walls of building. It can also be used on the interior walls and the roof of freezer rooms and cold storage facilities.	2.5-3.0 m ² /2coat/litre
► Sheet Membranes			
Proofex Torchseal 3PI	3 mm plain finish torch applied waterproofing membranes.	To provide waterproofing and damp-proof membranes for Concrete roof and floor slabs, Shallow Basement tankings, Car park deck slabs, Concrete retaining structures, Tunnels & subways.	Refer Product data sheet
Proofex Torchseal 3SI	3 mm slated finish torch applied waterproofing membranes.	To provide waterproofing and damp-proof membranes for Concrete roof and floor slabs, Shallow Basement tankings, Car park deck slabs, Concrete retaining structures, Tunnels & subways.	Refer Product data sheet
Proofex Torchseal 3SI Standard	3 mm slated finish torch applied waterproofing membranes.	To provide waterproofing and damp-proof membranes for: <ul style="list-style-type: none"> • Concrete roof and floor slabs • Shallow Basement tankings • Car park deck slabs • Concrete retaining structures • Tunnels and subways 	Refer Product data sheet
Proofex Torchseal 3PI Standard	3 mm plain finish torch applied waterproofing membranes.	To provide waterproofing and damp-proof membranes for Concrete roof and floor slabs, Shallow Basement tankings, Car park deck slabs, Concrete retaining structures, Tunnels & subways.	Refer Product data sheet
Proofex Torchseal 4PI	4 mm plain finish torch applied waterproofing membranes.	To provide waterproofing and damp-proof membranes for Concrete roof and floor slabs, Deep Basement tankings, Car park deck slabs, Concrete retaining structures, Tunnels & subways.	Refer Product data sheet
Proofex Torchseal 4PI Standard	4 mm plain finish torch applied waterproofing membranes.	To provide waterproofing and damp-proof membranes for Concrete roof and floor slabs, Car park deck slabs, Concrete retaining structures, Tunnels and subways.	Refer Product data sheet
Proofex Torchseal 4SI	4 mm slated finish torch applied waterproofing membranes.	To provide waterproofing and damp-proof membranes for Concrete roof and floor slabs, Deep Basement tankings, Car park deck slabs, Concrete retaining structures, Tunnels & subways.	Refer Product data sheet
Proofex Torchseal 4SI Standard	4 mm slated finish torch applied waterproofing membranes.	To provide waterproofing and damp-proof membranes for: <ul style="list-style-type: none"> • Concrete roof and floor slabs • Shallow Basement tankings • Car park deck slabs • Concrete retaining structures • Tunnels and subways 	Refer Product data sheet
Proofex Torchseal 4PDRI 10 m long x 1 m wide roll	Double reinforced torch applied waterproofing membranes.	To provide waterproofing of bridge deck slab and subways.	8.90 m ² / Roll Inclusive of overlapping
Proofex Self Adhesive Geotext 15 m long x 1 m wide roll	2mm thick Geo-Fabric topped (250 microns Geo-Fabric Film) cold applied bituminous waterproofing membrane.	Continuously bonded waterproof membrane for below ground waterproofing building and civil engineering structures.	13.4 m ² / Roll with 100 mm overlapping
Proofex Self Adhesive PR15 15 m long x 1 m wide roll	1.5 mm PE topped ployster reinforced cold applied bituminous waterproofing membrane.	It is used as a cold applied waterproofing / damp proofing membrane in horizontal and vertical applications for protection of various substrates like concrete, masonry, Gl, aluminium, wood etc.	13.4 m ² / Roll with 100 mm overlapping

Product	Description	Typical Uses	Dosage/Coverage/Yield
Proofex Self Adhesive PR 20 15 m long x 1 m wide roll	2 mm PE topped polyster reinforced cold applied bituminous waterproofing membrane.	It is used as a cold applied waterproofing/damp proofing membrane in horizontal and vertical applications for protection of various substrates like concrete, masonry, GI, aluminium, wood etc. in wide range of uses:	13.4 m ² / Roll with 100 mm overlapping
Proofex PGP 25 m long x 2.1 m wide roll	Loose laid PVC waterproofing membrane.	Provides a continuously loose laid waterproof membrane system for building and civil engineering structures and is particularly suited to below ground construction. Basement, tunnel, reservoirs, lakes and canal waterproofing.	Refer Product data sheet
Proofex PGP(X)	Loose laid PVC waterproofing membrane.	Provides a continuously loose laid waterproof membrane system for building and civil engineering structures such as Basement waterproofing, Tunnel waterproofing, Podiums and covered roof waterproofing , Green roofing.	Refer Product data sheet
Fosroc Membrane HDPE-P 1m x 20m x 1.2 mm 2m x 20m x 1.2 mm	Pre-applied HDPE pressure sensitive adhesive waterproofing membrane which bonds physically with concrete.	Critical & deep basements, durable, simple application, inert product, resistant to chemicals and aggressive ground salts.	20 m ² and 40 m ² respectively
Fosroc Membrane HDPE-P(Smooth)RF 1 m x 20m x 1.2 mm	Pre-applied HDPE pressure sensitive adhesive waterproofing membrane which bonds integrally to poured concrete, remaining in place if settlement of substrate occurs.	Fosroc Membrane HDPE-P (Smooth) RF provides water, water vapour and gas protection to water excluding structures and protects concrete from aggressive ground salts, chemicals and hydrocarbons.	Refer Product data sheet
Fosroc Membrane HDPE -P Standard	Pre-applied HDPE pressure sensitive adhesive waterproofing membrane which bonds integrally to poured concrete, remaining in place if settlement of substrate occurs.	Fosroc Membrane HDPE-P Standard provides water, water vapour and gas protection to water excluding structures and protects concrete from aggressive ground salts, chemicals and hydrocarbons.	Refer Product data sheet
Fosroc Membrane HDPE-S 1 m x 20m x 1.2 mm	Post Applied Self Adhesive waterproofing membrane for vertical reinforced concrete members for below ground structures.	Fosroc Membrane HDPE-S provides water, water vapour and gas protection to water excluding structures for vertical reinforced concret and protects concrete from aggressive ground salts, chemicals and hydrocarbons.	Refer Product data sheet
Proofex 3000 20 m long x 1 m wide roll	Cold applied, flexible, waterproof, high performance membrane incorporating a cross laminated HDPE carrier film with a polymer modified bitumen compound.	A high performance self-adhesive membrane for a range of waterproofing applications including basements and substructures. It provides a vapour and waterproof membrane to water excluding structures and protects concrete from attack by aggressive ground salts.	Refer Product data sheet
Proofex ORG Proofex OGP Proofex OFB 25m x 2.1 m roll	Loose laid synthetic TPO waterproofing membrane.	Provides a continuously loose laid waterproof membrane system for building and civil engineering structures: Podiums, parking decks, flat roofs and garden roofs waterproofing. Basement waterproofing. Lining of ponds, canals, reservoirs and landfills.	Refer Product data sheet
Proofex Engage 1.27 x 30 m	Pre-applied waterproofing membrane conforming to the requirements of BS EN 13967:2004 and BS 8102:2009. Proofex Engage mechanically bonds to poured concrete, remaining in place if settlement of substrate occurs	Critical & deep basements, durable, simple application, inert product, resistant to chemicals and aggressive ground salts.	38.10 m ²
Proofex Sheetdrain 80: 2 m x 20 m roll 100 2.44m x 12.5m roll	Geocomposite HDPE drainage and protection membrane	Proofex Sheetdrain is an HDPE cusped drainage sheet, available in 2 sizes: 8mm for depths up to 6m and 10mm for depths up to 20m. It is fixed to walls and roofs of structures to provide a filtered, drainage plane that will route ground water and gases away from the structure.	Refer Product data sheet



Product	Description	Typical Uses	Dosage/Coverage/Yield
Proofex Cavitydrain 80: 2 m x 20 m roll 100 2.44m x 12.5m roll	High density polyethylene drained cavity former for waterproofing of sub-structures	Proofex Cavitydrain is used where sub-structures are constructed in concrete designed to minimise water entry in accordance with BS 8102:2009 'Protection of structures against water from the ground', Proofex Cavitydrain provides a continuous water and damp proof drainage former to connect with drainage channels or outlets cast into floor slabs.	Refer datasheet

► Polyurea Spray Applied Waterproofing

Fosroc Polyurea WPE Drums : 400 litres	Fast setting, pure polyurea elastomeric waterproof coating.	Anti-corrosion, waterproof and protective coating for concrete and steel in a wide range of environmental conditions.	1.5 litre / m ² / 1.5mm thick
Fosroc Polyurea WH 200/Fosroc Polyurea WH 200GR Part A ISO Component 46ltr, 194 ltr. Part B Amine Components 46 Ltr, 194 ltr	Fast setting, hybrid polyurea/ polyurethane elastomeric waterproof coating.	Waterproofing and Protective coating for concrete & steel in a wide range of environmental conditions. Stadium stand, service roofs, Podiums, cut & cover tunnels,*Green roof, * Landscape,*(Fosroc Polyurea WH 200GR) * Consult Fosroc	1.5 litre / m ² / 1.5mm thick
Fosroc Polyurea WPW 188 litre drums Part A 188 litre drums Part B 18 litre drums Part A 18 litre drums Part B	Fosroc Polyurea WPW is a spray-applied, 100% solids, flexible, two-component, rapid curing pure Polyurea system, designed as a waterproofing and protective coating. It combines the advantages of seamless coating with very long life cycles and high durability.	Anti-corrosion, waterproof and protective coating for the internal linings of potable water containment structures.	1.5 – 2.0 litres per m ² (1.5 - 2.0mm thickness) depending on specification
Fosroc Polyurea WCS Boxes of 6 x 600 ml	Fast setting, pure polyurea elastomeric waterproof coating.	Standard grade offers an anti-corrosion, waterproof and protective coating for small areas and repairs of polyurea coatings, on concrete and steel surfaces. Gun Grade offers an excellent seam seal for the Fosroc Proofex Engage waterproofing system.	Refer datasheet

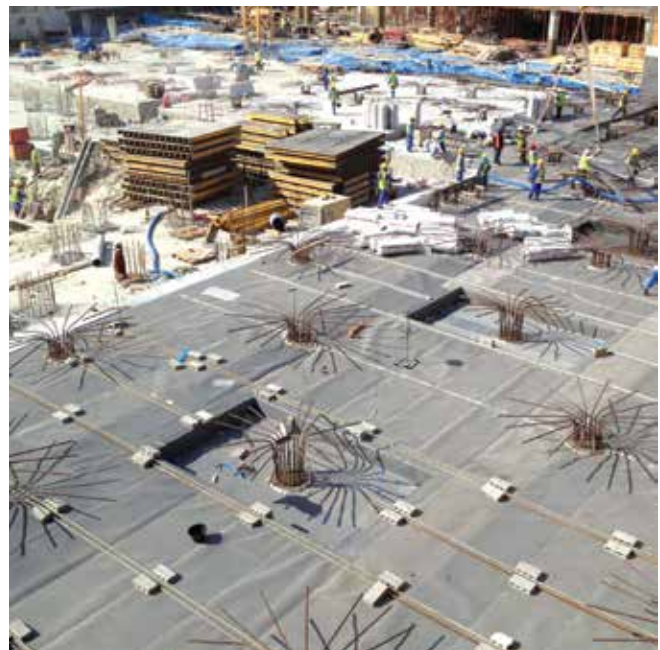
► PVC Waterstops

Supercast PVC	Centrally and externally placed PVC waterstops swellable waterstops.	The Supercast range of PVC waterstop is designed to provide an integral sealing system for movement & construction joints in concrete cast in-situ. These joints typically occur in the following types of structure: Water retaining : Reservoirs, water towers and sewage tanks, dams, culverts, canals & spillways, swimming pools, bunded areas surrounding liquid retaining tanks.	Refer datasheet
----------------------	--	--	-----------------

► Swellable Waterstops

Supercast SW 10 15m roll	Swellable waterstop for in-situ concrete.	Typical uses include secant piled and diaphragm walled basements, pile caps and casting against old concrete. For all construction joints subjected to water pressure.	Refer datasheet
Supercast SW 20 5m roll	Swellable waterstops for in-situ concrete.	Typical uses include secant piled and diaphragm walled basements, pile caps and casting against old concrete. For all construction joints subjected to water pressure.	Refer datasheet
Supercast SW30 5 m rolls	High swell hydrophillic waterstop for in-situ concrete.	Typical uses include secant piled and diaphragm walled basements, pile caps and casting against old concrete. Also for structures in saline environment. For all construction joints subjected to water pressure.	Refer datasheet

Product	Description	Typical Uses	Dosage/Coverage/Yield
Supercast SWX 310 ml & 600 ml cartridge	Swellable waterstops for in-situ concrete.	Fixing of swellable waterstops.	Refer datasheet
► Injection Hose System			
Supercast Predimax Injection Hose 100m rolls	Injection hose for protection against potential and active leaks in construction and cold joints in concrete	Supercast predimax injection system has been designed to prevent passage of water through concrete joints construction and cold joints, water excluding structures, e.g. subways and tunnels, water retaining structures, e.g. Canals and reservoirs, sewage treatment plants, below ground concrete construction, e.g. around pile heads & basements.	Refer datasheet
► Nitifoam			
Fosroc Nitifoam 40	Fosroc Nitifoam 40 is a two component,HFC blown, free from CFC/HCFC polyurethane based sprayable rigid foam system, closed-cell type, designed to meet insulation requirements in roof applications.	Particularly suitable for coating with Fosroc Polyurea, Polyurethane & Brushbond Roofguard system for a combination of waterproof and fire-rated insulation system for roofs.	Refer datasheet
Fosroc Nitifoam 45	Fosroc Nitifoam 45 is a two component,HFC blown, free from CFC/HCFC polyurethane based sprayable rigid foam system, closed-cell type, designed to meet insulation requirements in roof applications.	Particularly suitable for coating with Fosroc Polyurea, Polyurethane & Brushbond Roofguard system for a combination of waterproof and fire-rated insulation system for roofs.	Refer datasheet



Jointing materials as a bonding agent to provide structural integrity.

Product	Description	Typical Uses	Dosage/Coverage/Yield
► Segmental Bonding Adhesive			
Nitobond PC 6 kgs	Thixotropic epoxy adhesive for precast segments.	Bonding precast concrete segments to speed up construction and provide structural and water resistant joint eg. flyovers, bridges, pipelines etc.	1.63 m ² /pack @ 2 mm thickness
► Concrete Bonding Agents			
Nitobond EP 0.5, 1 & 4 litres	Solvent free epoxy bonding agent for joining old and new concrete.	For bonding new cementitious materials to existing cementitious surfaces. For use on horizontal surfaces and on vertical surfaces where mortar or concrete can be supported by form work. Ideal for extensions and repairs structural concrete in industrial, residential and commercial buildings.	2.6 m ² /litre
Nitobond EP Standard 1 & 4 litres	Two component epoxy bonding agent supplied in pre-weighed quantities for ready on-site mixing and use.	Bonding old and new cementitious substrates.	2.0 - 2.5 m ² /litre
Nitobond AR 1, 5, 20 litres	Acrylic emulsion cement modifier and concrete bonding agent.	Recommended as a primer for the Fosroc cementitious repairs system for improving bonding in renders and mortars, repair of worn, damaged or spalled concrete.	6-8 m ² /litre
Nitobond AR Standard 1, 5, 20 litres	Acrylic emulsion cement modifier and concrete bonding agent.	It is useful as polymer modified mortars and screeds for reinstatement of worn out / damaged concrete. It is also added to the concrete for improving the impermeability and thereby enhancing the waterproofing property.	Approximately 6 - 8 m ² /litre
Nitobond SBR 1, 5, 20 litres	Styrene butadine polymer bonding agent cum cement mortar & concrete modifier.	Used to modify the concrete for repairing distressed RC members and to modify mortars as waterproofing.	approximately 4- 5 m ² / litre depending on substrate porosity
Nitobond SBR Latex 1, 5, 20 litres	Latex acrylic polymer based cement modifier cum bonding aid with waterproofing property.	For modifying and improving bonding of floor toppings, renderings and mortars; repair of worn, damaged and spalled concrete, repair of large cracks, polymer modified floor screeds, waterproof plasters for masonry and slurries.	approximately 4- 5 m ² / litre depending on substrate porosity
► Block Jointing Mortar			
Conbextra Block Jointing Mortar 6 kgs	Ready to use mortar for AAC blocks and fly ash bricks.	Bedding for fixing AAC blocks and fly ash bricks	40 kg bag when mixed with 10 - 10.8 L of water, yields 30.80 L of volume



Tile Adhesives



Tile fixing solutions.

Product	Description	Typical Uses	Dosage/Coverage/Yield
► Tile Adhesive			
Nitotile GP 20 kg and 40 kg bags	General purpose tile adhesive.	Fixing of ceramic and clay tiles in dry indoor applications. Fixing of non-vitrified tiles	Approx. 2-3 sq.ft/kg for 3mm thickness using 6mm x 6mm square notch trowel.
Nitotile GPX 20 kg and 40 kg bags	High performance tile adhesive.	<ul style="list-style-type: none"> • Kitchens and bathrooms • Tile claddings • Fixing of ceramic and vitrified tiles 	Approx. 2-3 sq.ft/kg for 3mm thickness using 6mm x 6mm square notch trowel.
Nitotile GTA 20 kg and 40 kg bags	Granite and marble tile adhesive.	<ul style="list-style-type: none"> • Stone tiles • Marble tiles • Stone tiles 	Approx. 2-3 sq.ft/kg for 3mm thickness using 6mm x 6mm square notch trowel.
Nitotile MPA 20 kg and 40 kg bags	Multipurpose tile adhesive.	<ul style="list-style-type: none"> • Tile on tile • Vitrified tiles fixing • Glass mosaic tile fixing • Tiles in swimming pools 	Approx. 2-3 sq.ft/kg for 3mm thickness using 6mm x 6mm square notch trowel.
► Tile Grout			
Nitotile Grout 1 kg	Pigmented, cement based tile joint filler.	High quality joint filler for filling the tile joints.	Refer datasheet
Nitotile EPW Grout 1 kg & 5 kgs	Hygienic, hard wearing stain free water miscible epoxy resin tile grout.	Provides a stain free, chemical resistant, hard wearing, tile joint for areas like bathrooms, fountains and swimming pools. Factories, workshops and ware houses pharma industry, hospitals and labs commercial & residential buildings.	Refer datasheet



Grinding Aids & Performance Enhancers

Product	Description	Typical Uses	Dosage/Coverage/Yield
Cemax 333J	A liquid dispersing agent, for use as a grinding aid and performance enhancer for the production of Portland and other hydraulic cements	For use as a grinding aid and performance enhancer for the production of Portland and other hydraulic cements.	Refer datasheet
Cemax 300G	A liquid dispersing agent, for use as a grinding aid for the production of Portland and other hydraulic cement	For use as a grinding aid for the production of Portland and other hydraulic cements, suitable for enhancing productivity of cement mills.	Dosage 0.01 - 0.07% by weight, depending on type of clinker, type of mill and desired results.
Cemax 691	Performance Enhancer for Blended and Portland Cements	To improve cement mill grinding efficiency and compressive strength of cement.	Refer datasheet
Cemax 343M	A liquid dispersing agent, for use as a grinding aid for the production of Portland and other hydraulic cements.	For use as a grinding aid and performance enhancer for the production of Portland and other hydraulic cements.	Dosage 0.03 - 0.07% by weight, depending on type of clinker, type of mill and desired results.
Cemax 102S	A liquid dispersing agent, for use as a grinding aid for the production of Portland and other hydraulic cements.	For use as a grinding aid for the production of Portland and other hydraulic cements.	0.01 - 0.04% by weight, depending on type of clinker, type of mill and desired results

Fosroc's chemical technology also encompasses supply of additives for the cement industry. Grinding aids and performance enhancers are a special category of products that are used in grinding clinker and non hydraulic additives to produce a variety of high quality cements. These products are tailor made to suit the different needs of the cement industry. Some of the major advantages of using these products are:

- Reduce specific energy consumption of grinding
- Enhance throughput of the mill
- Lower clinker content in PPC and PSC to conserve valuable resources
- Reduce pack set
- Promotion of better flow characteristics of cement



Product	Description	Typical Uses	Dosage/Coverage/Yield
Cemax 350CL	Grinding aid for coal grinding.	Cemax 350CL series are an aqueous solution of high performance dispersing agent for use as a grinding aid for coal/petcoke grinding.	0.03% - 0.10% by weight of coal/petcoke
Cemax 412	Grinding aid for performance enhancer.	For use as a grinding aid performance enhancer for the production of portland and other hydraulic cements.	0.03 - 0.07% by weight, depending on type of clinker, type of mill and desired results
Cemax 415	Grinding aid for performance enhancer.	For use as a grinding aid performance enhancer for the production of portland and other hydraulic cements.	0.03 - 0.07% by weight, depending on type of clinker, type of mill and desired results
Auracem 604	High performance grinding aid and performance enhancer.	For use as a grinding aid and performance enhancer for the production of portland and limestone cements.	0.03 - 0.07% by weight, depending on type of clinker, type of mill and desired results



DISINFECTANT

► Surface Cleaner

Reebaklens Disinfectant
0.5, 1, 2 & 5 L packs

High performance disinfectant

For disinfecting surfaces such as walls, floor, appliances, cabinets, table tops, sinks, door knobs, sofa and curtains etc.
*Not for applications on food or any edibles

Refer datasheet

FOSROC OPERATIONS



Map not to scale

Fosroc Chemicals (India) Pvt Limited

Head Office :

Embassy Point, No. 150, 2nd Floor, Infantry Road, Bangalore - 560 001, Karnataka
Phone : +91 80 4252 1900 Fax: +91 80 2228 1510

Important Note

Fosroc products are guaranteed against defective materials and manufacture and are sold subject to its standard terms and conditions of sale, copies of which may be obtained on request. Whilst Fosroc endeavours to ensure that any advice, recommendation, specification or information it may give is accurate and correct, it cannot, because it has no direct or continuous control over where or how its products are applied, accept any liability either directly or indirectly arising from the use of its products, whether or not in accordance with any advice, specification, recommendation or information given by it.



constructive solutions